

A close-up, low-angle shot of a modern, minimalist Point of Sale (POS) terminal. The device features a white frame and a black screen. The camera angle is from below, looking up at the terminal, which is slightly tilted. The background is a plain, light-colored surface. The text "DesirePOS" is overlaid in white, centered horizontally and slightly below the vertical center.

Desire**POS**



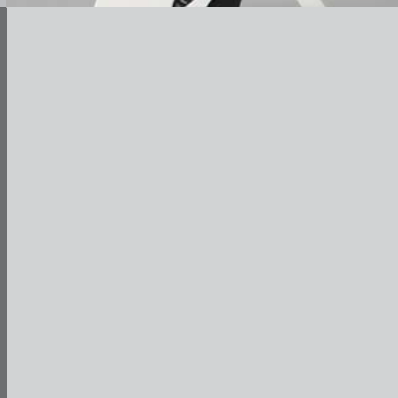
MSR & i Button



Flat Touch Screen



Dual LCD Monitors



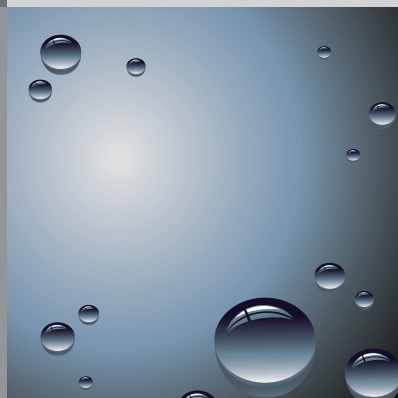
High Brightness
VFD Display



Stylish Design



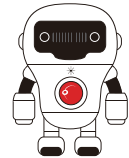
Splash Proof



DesirePOS



Ready in X86 Windows



- 15" flat touch screen technology
- Intel® Bay-Trail J1900 / Ivy Bridge B960 / Core™ i3 / i5 processor
- 100% Fan-less design
- Elegant with small foot print design
- Combinations of multi-colors White / Dark Grey



Variety of color choice
Black, Dark Gray, White

System	
CPU Support	Intel® Atom™ Dual Core D525 1.8Ghz CPU Intel® Pentium® Processor B960 Intel® Ivy Bridge Intel® Core™ i7 / i5 / i3 / Dual Cores CPU Intel® Celeron® Processor Bay-Trail J1900 (2M Cache , up to 2.42GHz)
Memory	Support up to 4GB DDR3 / 8G DDR3
Core Logic	Intel® NM10 / HM76 / BayTrail
Net Work	10/100/1000 Base-T Fast Ethernet
Power Supply	12V Power Adaptor
System weight	6.8 kgs
Dimension	380x 370 x 190 (WxHxD) mm
O/S	Windows XP/XPE , WEPOS , POSReady 2009 , Windows 7, POSReady 7 , Windows 8 (Ivy Bridge and Baytrail platform only)
Storage	
Storage	1 x 2.5" SATA HDD
SSD	SSD SATA Interface Max.1TB
I/O Ports	
Serial Ports	4 x external COM / 2 x internal COM (w/ +5V, +12V selectable)
USB Ports	4 x external USB Ports
mPCIe	1 x internal
Ethernet	1 x 10/100/1000 Mbps (RJ45)
PS/2	1 x PS/2 keyboard/mouse port
VGA	1 x DB-15 VGA Interface
Parallel Port	1 x DB25
Audio	1 x 2W speaker (Optional)
Cash Drawer	1 x RJ11
DC-IN	12V DC-IN
Power Switch	1 x Power Switch
Display	
LCD	15" TFT LCD Panel
Max. Resolution	1024 x 768
Brightness	250 nits
Touch Screen	5 wire resistive touch panel
Environmental	
Operating Condition	0°C ~ 40°C, 20%RH ~ 90%RH
Storage Condition	-20°C ~ 60°C, 10%RH ~ 90%RH
Peripheral Options	
Printer	3" Thermal Printer (TP-260 , Printing speed 260mm/s)
Customer Display	VFD Type: 20 columns x 2 lines, each column 5x7 dots LCD Type: 8" , 10" or 15" LCD
MSR	JIS-I or II, ISO Track 1/2/3 USB (default)
i-button	Read only, USB interface
Color	Dark Grey/White
Wireless LAN	Mini PCIe Wireless LAN Module 802.11 b/g/n
RFID	ISO 14443A, UltraLight,Mifare@PRO, DESfire
Fingerprint	Finger Print module
Safety standards	CE/FCC

Models Features



Lcd Led Backlight



2nd LCD Display



Magnetic Stripe Card



VFD Customer Display

Peripheral Options



Lcd Led Backlight



2nd LCD Display



Magnetic Stripe Card



VFD Customer Display



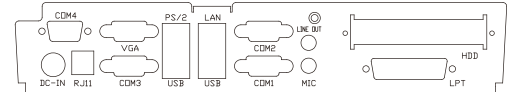
Thermal Printer



Barcode Scanner

I/O Ports

B960/J1900



D525

